



KNIFE GATE VALVES

DP SERIES



DP SERIES

With its special O-Port gate design, the DP model is suitable for the most difficult applications involving solids. Due to its unique design, it can easily cut through a medium column holding solids. The integrated transverse seal sets the DP model apart from conventional O-Port gate valves, guaranteeing maximum performance and zero leakage.



CHARACTERISTICS DP SERIES

50 – 400 mm

Nominal sizes

Stainless steel, Cast iron, Ductile iron, Cast steel, Special material

Material

0 – 25 bar

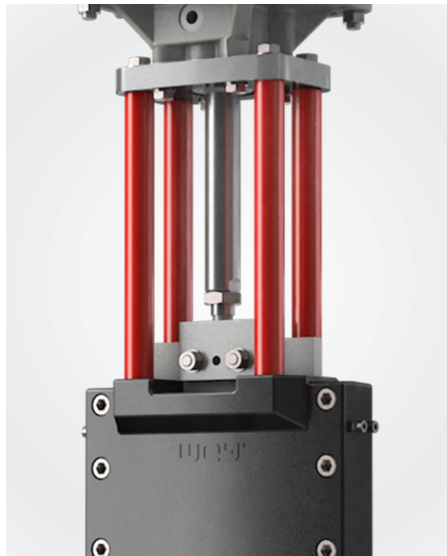
Pressure rating

PN10, PN16, PN25, ANSI Class 150

Flange drilling

EN 558 series 20, Special length

Face to face dimension



The through gate design allows valve to be closed through stagnant media columns or if there are long-fiber media.

Robust 4-post topwork for maximum load and a wide variety of actuator types.

APPLICATION AREAS

Biogas plants

e.g. Wood chips ...

Chemical and petrochemical industries

e.g. Granulates ...



Wey DP made of hardened steel in our production site in Switzerland.

MATERIAL OF CONSTRUCTION

Part	Cast iron	Stainless steel
Body	EN-GJL-250	1.4404
Gate	1.4301	1.4404*
Seal	NBR / Brass	NBR / Brass
Topwork	Carbon steel	Carbon steel
Stem / Piston rod	1.4101	1.4104

Other materials upon request

*hard chromed

CORROSION PROTECTION

Body	2 Comp. Epoxy-Polyamide Resin Primer, 2 Comp. Polyurethane-Enamel-Top Coat
Topwork	2 Comp. Epoxy-Polyamide Resin Primer, 2 Comp. Polyurethane-Enamel-Top Coat

ACTUATORS



Handwheel



Bevel gear



Pneumatic cylinder








Hydraulic cylinder





Electric actuator

DOWNLOADS

General documents

Product brochure knife gate valves	PDF	
Instruction manual	PDF	
Lubricants	PDF	
Declaration of conformity DGRL	PDF	
Declaration of incorporation ECMD	PDF	

Data sheets

DP with handwheel	PDF	
DP with pneumatic cylinder	PDF	

**CONTACT US FOR YOUR TAILOR-
MADE SOLUTION.**